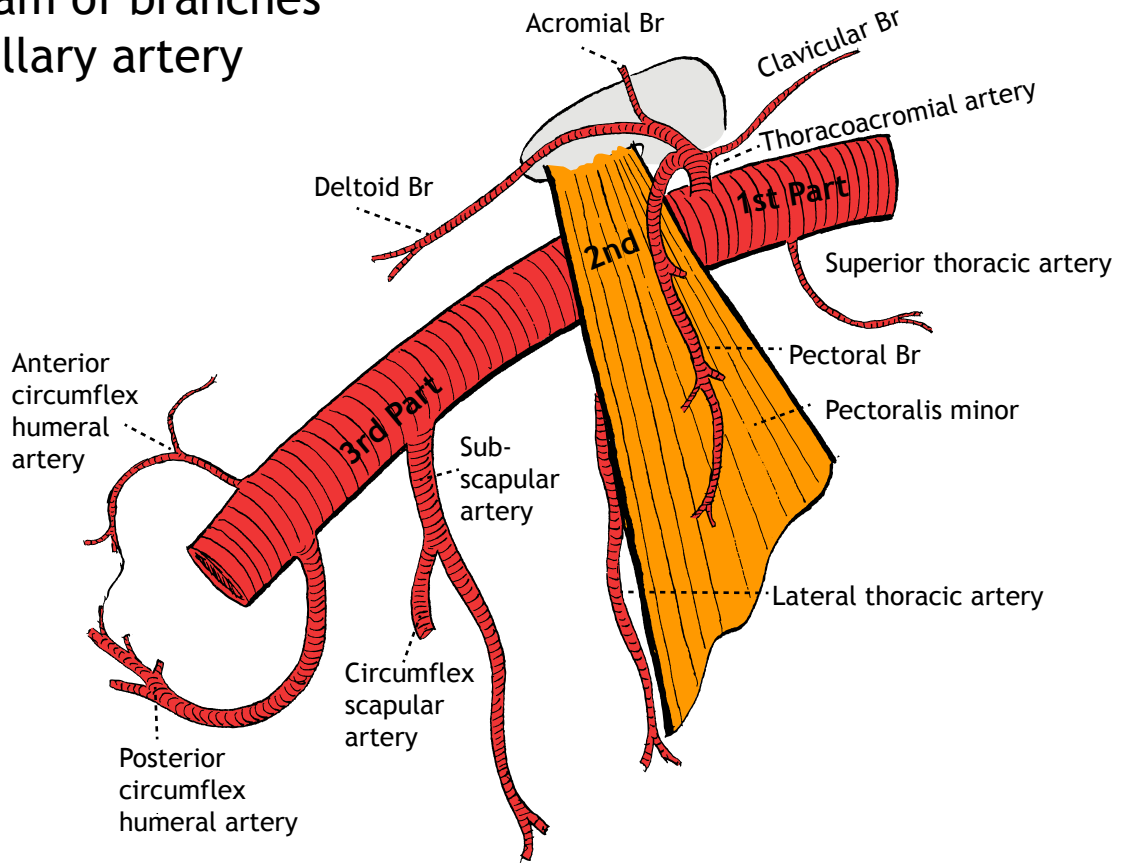


Diagram of branches of axillary artery



From 2nd part (axilla) it gives off branches to the shoulder, of the first part it gives off the
 1st part (axilla) is situated in the upper part of the axilla, bounded by the pectoralis minor muscle, the
 2nd part (axilla) is situated in the middle part of the axilla, bounded by the pectoralis minor muscle
 into two, one on each side, the first part is the pectoralis major artery and the second part is the
 circumflex humeral arteries. The pectoralis minor muscle is the main landmark for the division of the
 axillary artery into three parts. The pectoralis minor muscle is a fan-shaped muscle that originates from
 the 5th rib and inserts into the coracoid process of the scapula. The axillary artery is the continuation
 of the subclavian artery. The first part of the axillary artery is the part of the artery that is
 situated proximal to the pectoralis minor muscle. The second part of the axillary artery is the
 part of the artery that is situated between the pectoralis minor and subscapular muscles. The third
 part of the axillary artery is the part of the artery that is situated distal to the subscapular
 muscle. The axillary artery gives off several branches. The first part gives off the thoracoacromial
 artery, the pectoral branches, and the anterior circumflex humeral artery. The second part gives
 off the pectoral branch and the lateral thoracic artery. The third part gives off the subscapular
 artery, the circumflex scapular artery, and the posterior circumflex humeral artery. The axillary
 artery terminates by dividing into the brachial artery and the axillary vein. The axillary vein is
 formed by the union of the basilic vein and the cephalic vein. The axillary vein is the main
 vein of the upper limb and carries blood from the hand and forearm back to the heart. The axillary
 vein is the largest vein in the upper limb. The axillary vein is the main vein of the upper limb and
 carries blood from the hand and forearm back to the heart. The axillary vein is the largest vein in
 the upper limb. The axillary vein is the main vein of the upper limb and carries blood from the hand
 and forearm back to the heart. The axillary vein is the largest vein in the upper limb. The axillary
 vein is the main vein of the upper limb and carries blood from the hand and forearm back to the heart.